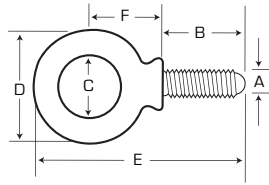




FORGED EYE BOLTS



Product #	Thread Size (in) (A)	Shank Length (in) (B)	Eye Inner Dia. (in) (C)	Eye Outside Dia. (in) (D)	Overall Length (in) (E)	Center Eye to Shoulder (in) (F)	Rated Capacity (lbs)	Weight (lbs)
J94020	1/4 - 20	1.00	.69 - .81	1.19	2-9/41 - 2-9/17	.69 - .81	500	0.05
J94021	5/16 - 18	1.12	.81 - .94	1.44	2-33/50 - 2-32/33	.88 - 1.00	900	0.10
J94022	3/8 - 16	1.25	.94 - 1.06	1.69	3-1/11 - 3-8/17	1.06 - 1.09	1,300	0.16
J94023	7/16 - 14	1.38	1.00 - 1.12	1.81	3-16/39 - 3-32/41	1.19 - 1.31	1,800	0.24
J94024	1/2 - 13	1.50	1.12 - 1.25	2.12	3-17/21 - 4-4/21	1.31 - 1.44	2,400	0.35
J94025	9/16 - 12	1.75	1.31 - 1.44	2.56	4-14/25 - 4-47/50	1.59 - 1.72	3,200	0.47
J94026	5/8 - 11	1.75	1.31 - 1.44	2.56	4-14/25 - 4-47/50	1.59 - 1.72	4,000	1.00
J94027	3/4 - 10	2.00	1.44 - 1.56	2.81	5 - 5-1/2	1.72 - 1.91	5,000	1.00
J94028	7/8 - 9	2.25	1.56 - 1.69	3.19	5-3/4 - 6-4/21	2.03 - 2.22	7,000	1.63
J94029	1 - 8	2.50	1.69 - 1.81	3.56	6 - 6-22/25	2.22 - 2.41	9,000	2.22
J94030	1-1/8 - 7	2.75	1.94 - 2.06	4.06	7-11/25 - 7-3/4	2.59 - 2.78	12,000	3.40
J94031	1-1/4 - 7	3.00	2.12 - 2.25	4.44	8-9/17 - 8-11/25	3.03 - 2.84	15,000	4.44
J94032	1-1/2 - 6	3.50	2.44 - 2.56	5.19	9-9/41 - 9-18/25	3.19 - 3.44	21,000	7.36
J94033	1-3/4 - 5	3.75	2.75 - 3.00	6.00	10-1/2 - 11-3/25	3.88 - 4.12	28,000	11.35

B18.15

AVIATION SNIPS

- › Available in straight, left, or right models.
- › Compound leverage multiplies handle pressure and increases control for intricate cutting.
- › Serrated blades for maximum grip of the material being cut.
- › Color coded vinyl grips.



Product #	Cuts	Handle Color	Blade Length (in)	Overall Length (in)	Weight (lbs)
J303L	Left	Red	1-3/8	10	0.94
J303R	Right	Green	1-3/8	10	0.94
J303S	Straight	Yellow	1-3/8	10	0.94

ASME B107.16M

AVIATION SNIPS - OFFSET

- › Available in left or right models.
- › Compound leverage multiplies handle pressure and increases control.
- › Offset handle keeps hands above working area for cutting ease and comfort.
- › Serrated blades for maximum grip of the material being cut.



Product #	Cuts	Handle Color	Blade Length (in)	Overall Length (in)	Weight (lbs)
J303LS	Left	Red	1-1/4	10	1.00
J303RS	Right	Green	1-1/4	10	1.00

ASME B107.16M